

CS

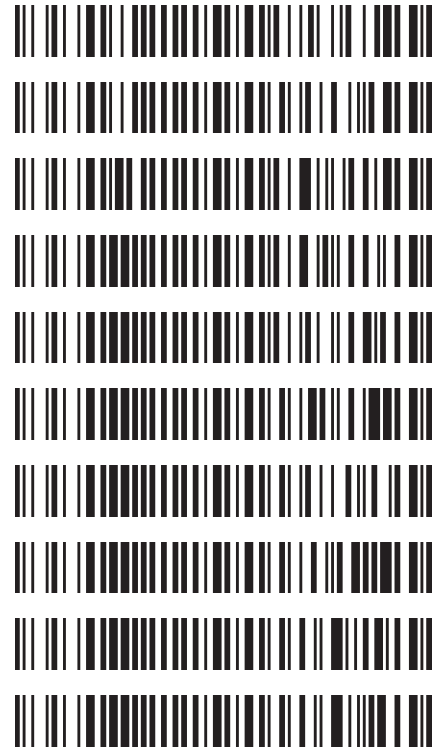
reviewed 1-9-18

12/22/2017

Boyle

Worklist: 2093

<u>LAB_CASE</u>	<u>ITEM</u>	<u>TASK_ID</u>	<u>DESCRIPTION</u>
C2017-2231	2	103316	AM 3 Urine Carboxy-THC
C2017-2409	3	103317	AM 3 Urine Carboxy-THC
M2017-5370	3	103318	AM 3 Urine Carboxy-THC
P2017-2626	1	103319	AM 3 Urine Carboxy-THC
P2017-2658	1	103320	AM 3 Urine Carboxy-THC
P2017-2815	1	103321	AM 3 Urine Carboxy-THC
P2017-2912	1	103322	AM 3 Urine Carboxy-THC
P2017-2919	1	103323	AM 3 Urine Carboxy-THC
P2017-2937	1	103324	AM 3 Urine Carboxy-THC
P2017-2938	1	103325	AM 3 Urine Carboxy-THC



Data Path : C:\My Files\cshrum\Desktop\Consolidated\Data\URINE\010318 CANN\
Data File : THC-NC.D
Acq On : 3 Jan 2018 8:22
Operator : District 5 Forensic Services
Sample : Negative Control
Misc : Lot # POC112116; AM #3 Worklist 2093
ALS Vial : 76 Sample Multiplier: 1

Integration Parameters: events.e
Integrator: ChemStation

Method : C:\gcms\1\methods\TOX.M
Title :

Signal : EIC Ion 371.00 (370.70 to 371.70): THC-NC.D\data.ms

peak #	R.T. min	first scan	max scan	last scan	PK TY	peak height	corr. area	corr. % max.	% of total
1	5.204	13	42	61	BV	1470	20637	100.00%	26.938%
2	5.596	166	178	188	PV	629	9628	46.66%	12.568%
3	5.648	188	196	212	VV	439	7072	34.27%	9.232%
4	6.422	440	465	467	PV	165	2327	11.27%	3.037%
5	6.436	467	469	471	VV	154	1049	5.08%	1.370%
6	6.445	471	473	485	VV	148	1816	8.80%	2.370%
7	6.702	536	562	574	BV	167	4761	23.07%	6.215%
8	6.830	597	606	615	VV	145	3326	16.12%	4.341%
9	6.888	615	627	654	VV	336	9156	44.36%	11.951%
10	7.090	674	697	712	VV	294	8320	40.32%	10.861%
11	7.163	712	722	735	VV	112	2831	13.72%	3.695%
12	7.231	735	746	756	VV	128	2764	13.39%	3.608%
13	7.297	756	769	776	PBA	164	2922	14.16%	3.815%

Sum of corrected areas: 76611
Signal : EIC Ion 473.00 (472.70 to 473.70): THC-NC.D\data.ms

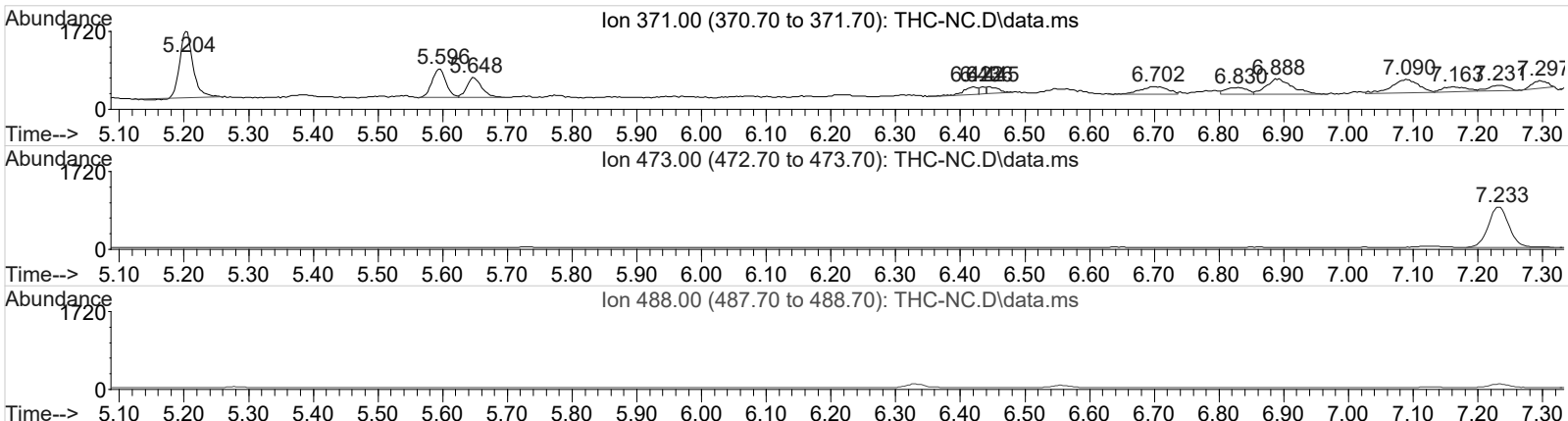
peak #	R.T. min	first scan	max scan	last scan	PK TY	peak height	corr. area	corr. % max.	% of total
1	7.233	729	746	776	BBA2	887	19434	100.00%	100.000%

Sum of corrected areas: 19434
Signal : EIC Ion 488.00 (487.70 to 488.70): THC-NC.D\data.ms

peak #	R.T. min	first scan	max scan	last scan	PK TY	peak height	corr. area	corr. % max.	% of total
--------	----------	------------	----------	-----------	-------	-------------	------------	--------------	------------

No peaks were detected using the method integration parameters!

TOX.M Thu Jan 04 07:36:27 2018



Data Path : C:\My Files\cshrum\Desktop\Consolidated\Data\URINE\010318 CANN\
Data File : THC-PC1.D
Acq On : 3 Jan 2018 8:34
Operator : District 5 Forensic Services
Sample : Spiked Positive c-THC Control
Misc : c-THC lot # 0497429 in Negative Lot # POC112116; Worklist 2093
ALS Vial : 77 Sample Multiplier: 1

Integration Parameters: events.e
Integrator: ChemStation

Method : C:\gcms\1\methods\TOX.M
Title :

Signal : EIC Ion 371.00 (370.70 to 371.70): THC-PC1.D\data.ms

peak #	R.T. min	first scan	max scan	last scan	PK TY	peak height	corr. area	corr. % max.	% of total
1	5.201	15	41	60	BV	185	4013	38.73%	27.920%
2	6.458	434	477	495	BV 2	487	10360	100.00%	72.080%

Sum of corrected areas: 14373
Signal : EIC Ion 473.00 (472.70 to 473.70): THC-PC1.D\data.ms

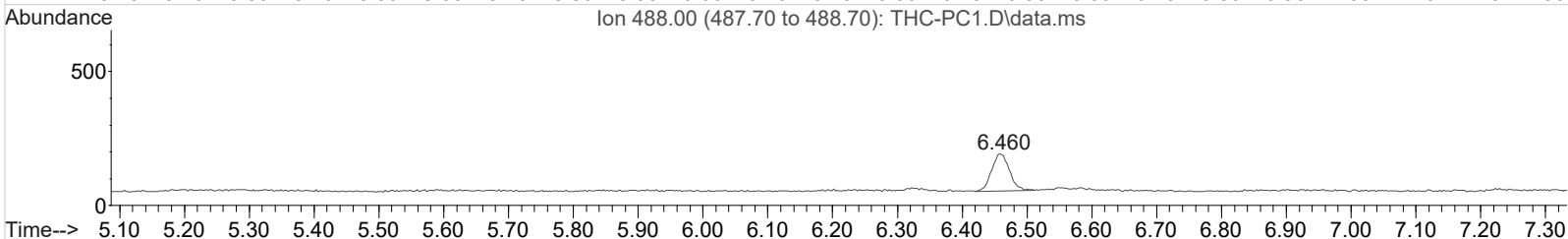
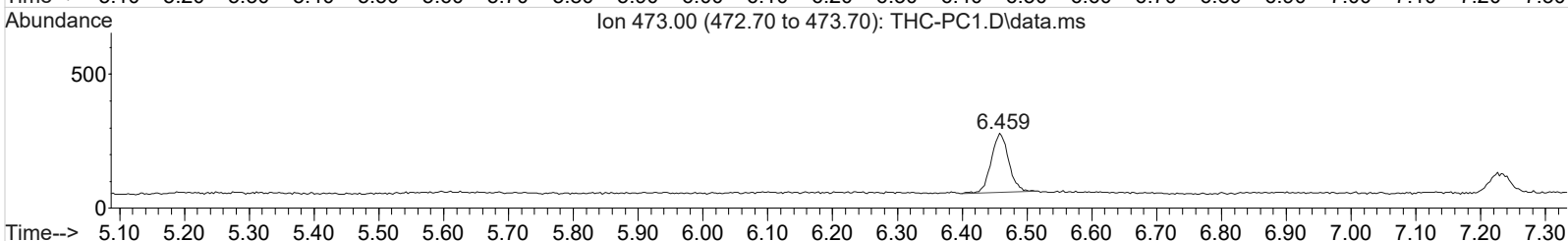
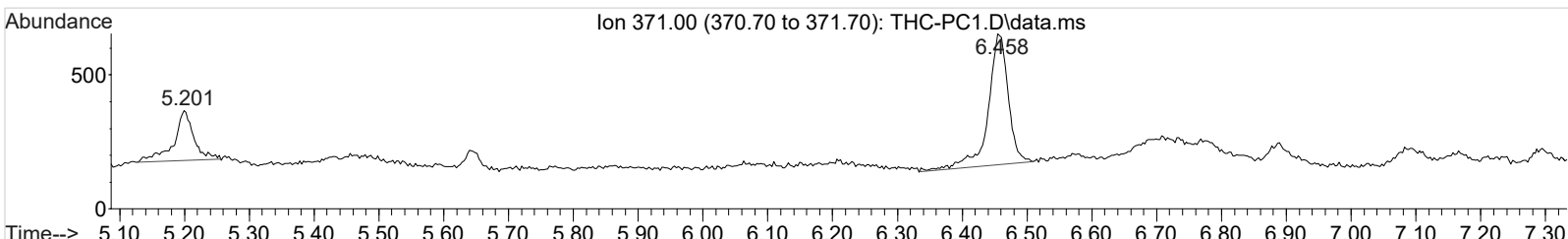
peak #	R.T. min	first scan	max scan	last scan	PK TY	peak height	corr. area	corr. % max.	% of total
1	6.459	457	478	498	BB 2	218	4131	100.00%	100.000%

Sum of corrected areas: 4131
Signal : EIC Ion 488.00 (487.70 to 488.70): THC-PC1.D\data.ms

peak #	R.T. min	first scan	max scan	last scan	PK TY	peak height	corr. area	corr. % max.	% of total
1	6.460	464	478	496	BB 2	137	2611	100.00%	100.000%

Sum of corrected areas: 2611

TOX.M Thu Jan 04 07:30:01 2018



Data Path : C:\My Files\cshrum\Desktop\Consolidated\Data\URINE\010318 CANN\
Data File : THC-PC2.D
Acq On : 3 Jan 2018 17:42
Operator : District 5 Forensic Services
Sample : Spiked Positive c-THC Control
Misc : c-THC lot # 0497429 in Negative Lot # POC112116; Worklist 2093
ALS Vial : 77 Sample Multiplier: 1

Integration Parameters: events.e
Integrator: ChemStation

Method : C:\gcms\1\methods\TOX.M
Title :

Signal : EIC Ion 371.00 (370.70 to 371.70): THC-PC2.D\data.ms

peak #	R.T. min	first scan	max scan	last scan	PK TY	peak height	corr. area	corr. % max.	% of total
1	5.200	9	40	64	BB	128	3768	52.92%	34.604%
2	6.456	463	477	497	VB	346	7121	100.00%	65.396%

Sum of corrected areas: 10889
Signal : EIC Ion 473.00 (472.70 to 473.70): THC-PC2.D\data.ms

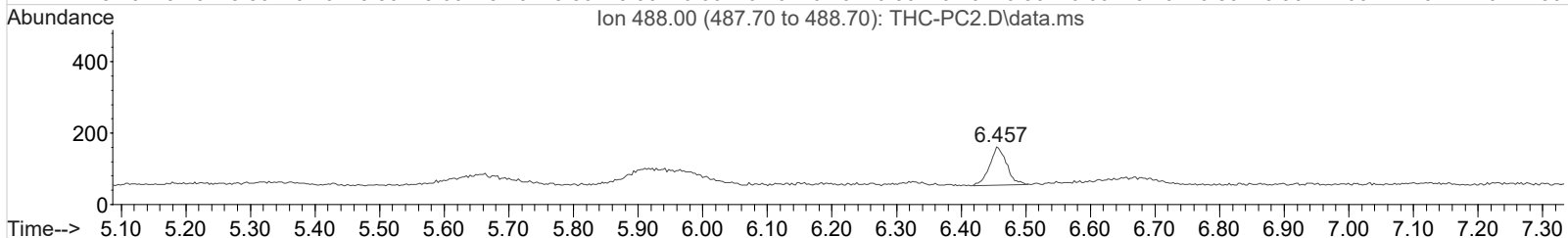
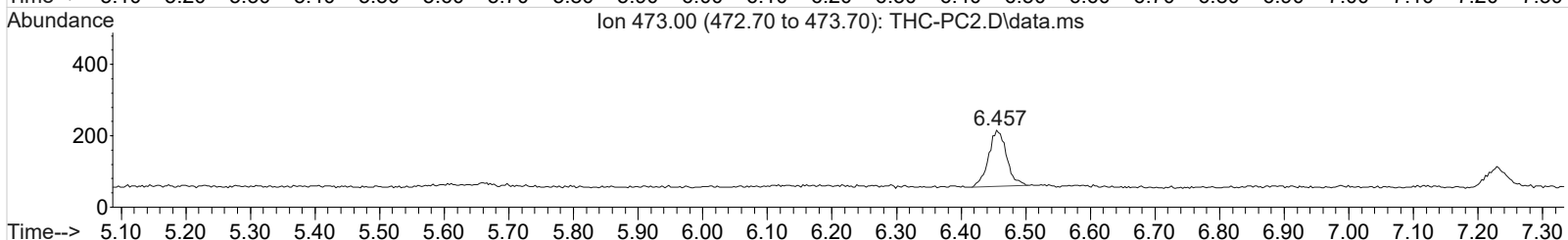
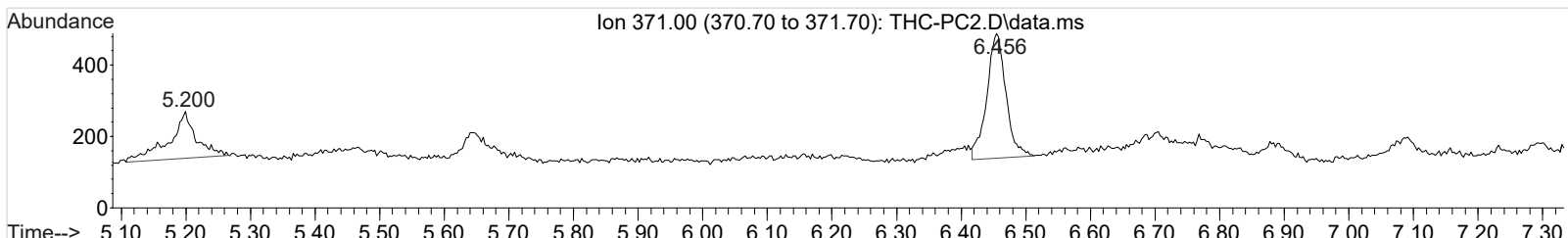
peak #	R.T. min	first scan	max scan	last scan	PK TY	peak height	corr. area	corr. % max.	% of total
1	6.457	463	477	493	BB	155	2997	100.00%	100.000%

Sum of corrected areas: 2997
Signal : EIC Ion 488.00 (487.70 to 488.70): THC-PC2.D\data.ms

peak #	R.T. min	first scan	max scan	last scan	PK TY	peak height	corr. area	corr. % max.	% of total
1	6.457	464	477	493	BB	106	1943	100.00%	100.000%

Sum of corrected areas: 1943

TOX.M Thu Jan 04 07:28:15 2018



Data Path : C:\My Files\cshrum\Desktop\Consolidated\Data\URINE\010318 CANN\
Data File : THC-C3.D
Acq On : 3 Jan 2018 8:56
Operator : District 5 Forensic Services
Sample : Biorad C3 Control
Misc : C3 Lot # 68440; Worklist 2093
ALS Vial : 78 Sample Multiplier: 1

Integration Parameters: events.e
Integrator: ChemStation

Method : C:\gcms\1\methods\TOX.M
Title :

Signal : EIC Ion 371.00 (370.70 to 371.70): THC-C3.D\data.ms

peak #	R.T. min	first scan	max scan	last scan	PK TY	peak height	corr. area	corr. % max.	% of total
1	5.200	31	40	52	BV	173	2256	19.19%	14.182%
2	5.592	166	177	186	BV	136	1894	16.11%	11.907%
3	6.454	427	476	494	BV 2	595	11757	100.00%	73.911%

Sum of corrected areas: 15907
Signal : EIC Ion 473.00 (472.70 to 473.70): THC-C3.D\data.ms

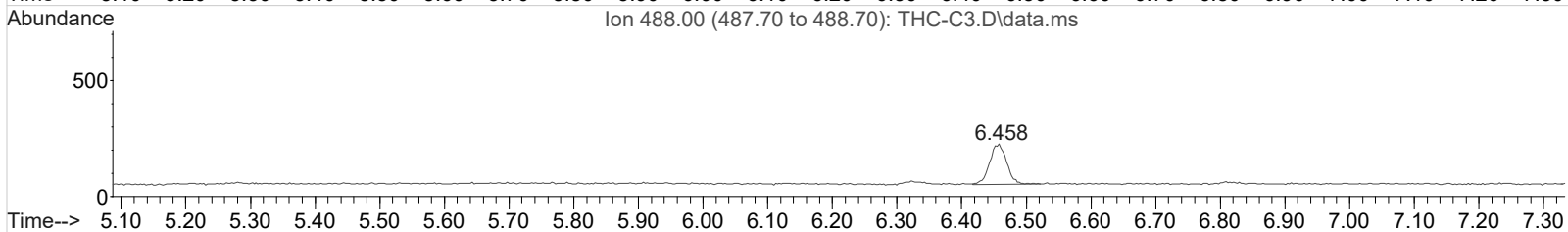
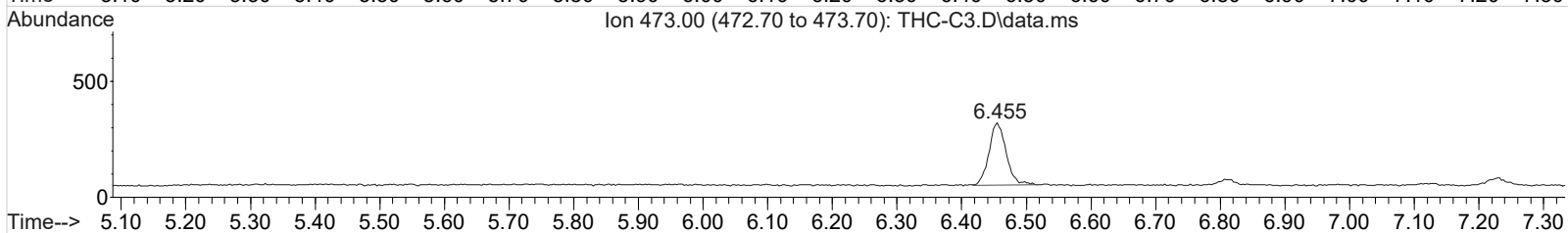
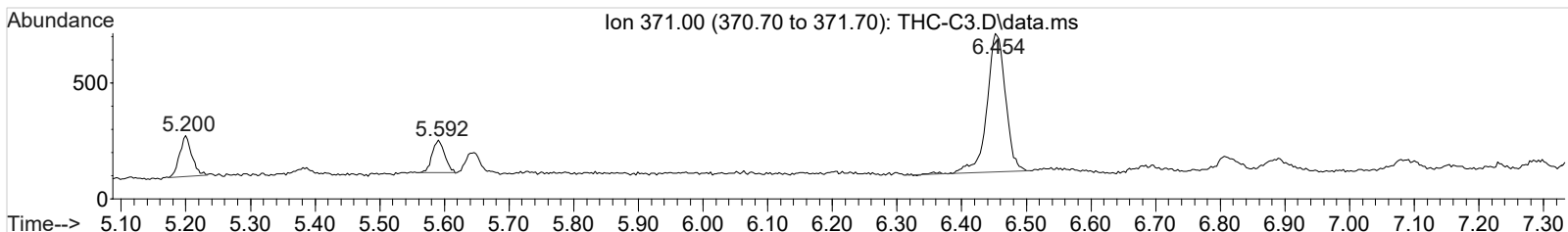
peak #	R.T. min	first scan	max scan	last scan	PK TY	peak height	corr. area	corr. % max.	% of total
1	6.455	463	476	498	BB 2	265	4868	100.00%	100.000%

Sum of corrected areas: 4868
Signal : EIC Ion 488.00 (487.70 to 488.70): THC-C3.D\data.ms

peak #	R.T. min	first scan	max scan	last scan	PK TY	peak height	corr. area	corr. % max.	% of total
1	6.458	463	477	499	BB 2	169	3127	100.00%	100.000%

Sum of corrected areas: 3127

TOX.M Thu Jan 04 07:34:34 2018



2.4.4 Carboxy-THC QC Calculations

Run Date: 1/3/2017

Case Calculations:
Lab Case #: C3 Lot 68440

<i>EIC Ion 371 Corr. Area:</i>	11757	
<i>EIC Ion 473 Corr. Area:</i>	4868	473:371 Ratio: 0.414
<i>EIC Ion 488 Corr. Area:</i>	3127	488:371 Ratio: 0.266

Quality Control Calculations:

Retention Time acceptable range: 6.358 to 6.556

	<i>1st ctrl</i>	<i>2nd ctrl</i>
<i>EIC Ion 371 Corr. Area:</i>	10360	7121
<i>EIC Ion 473 Corr. Area:</i>	4131	2997
<i>EIC Ion 488 Corr. Area:</i>	2611	1943

Approximate minimum corrected area of 371 ion: ~ 2072

<i>Ratio of 473:371</i>				
<i>1st ctrl</i>	<u>0.399</u>	<i>2nd ctrl</i>	<u>0.421</u>	<i>avg.</i> 0.410
<i>Accepted Range (+/- 20%)</i> <u>0.328 - 0.492</u>				

<i>Ratio of 488:371</i>				
<i>1st ctrl</i>	<u>0.252</u>	<i>2nd ctrl</i>	<u>0.273</u>	<i>avg</i> 0.262
<i>Accepted Range (+/- 20%):</i> <u>0.210 - 0.315</u>				

Carboxy-calculation sheet
Revision 0 effective date 10/23/13
Issuing authority: Quality Manager